



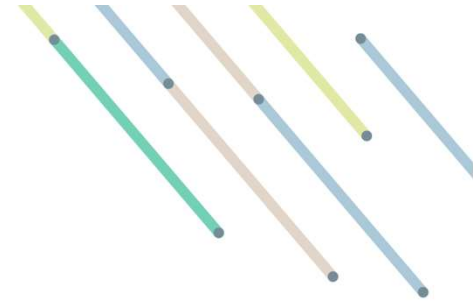
Netbeheer  
Nederland



# Country settings

Generation units Type A and B

# Inleiding



- Generation units connected to the Dutch electricity network should meet the requirements of the European Network Code Requirements for Generators – RfG (EU Regulation 2016/631)
- For some parameters the RfG gives a range of possible settings
- Each member country had to specify a value in that range
- In the Netherlands this is done in the ‘Netcode’
- On the next page these settings given
- Manufacturers of generation units often have a menu with pre-programmed country settings
- The settings on the next page should be used as country settings for the Netherlands

# Country settings the Netherlands



Topic	Type A	Type B
Protection settings	For LV and MV U<<: 70% / 0.2 s U<: 80% / 2 s U>: 110% 10-minute average / 0 sec U>>: 115% / 0 sec f<: 47.5 Hz / 2 sec f>: 51.5 Hz / 2 sec	U<<: 5% / 0.25 s U<: 85% / 3 s U>: 115% / 2 sec f<: 47.5 Hz / 2 sec f>: 51.5 Hz / 2 sec
LFSM-O	Threshold 50.2 Hz Droop 5% Pref = Pact	Threshold 50.2 Hz Droop 5% Pref = Pact
Fault-Ride-Through and Fast fault-current injection	None	Active Insensitivity range +/-10% k = 2 Umax=120%
Automatic reconnection	Umin = 90% Umax = 110% fmin: 49.9 Hz fmax: 50.1 Hz Waiting time: 60 sec Gradiënt P: 10%/min	Umin = 90% Umax = 110% fmin: 49.9 Hz fmax: 50.1 Hz Waiting time: 60 sec Gradiënt P: 10%/min
Reactive power / voltage control	Default: power factor = 1 *)	Default: power factor = 1 *)

\*) This is a default setting. During commissioning network operators can have additional requirements